

MONTHLY MEMBERSHIP PROGRESS REPORT

District 17 A

Results as of: 3/31/2024

GMT:

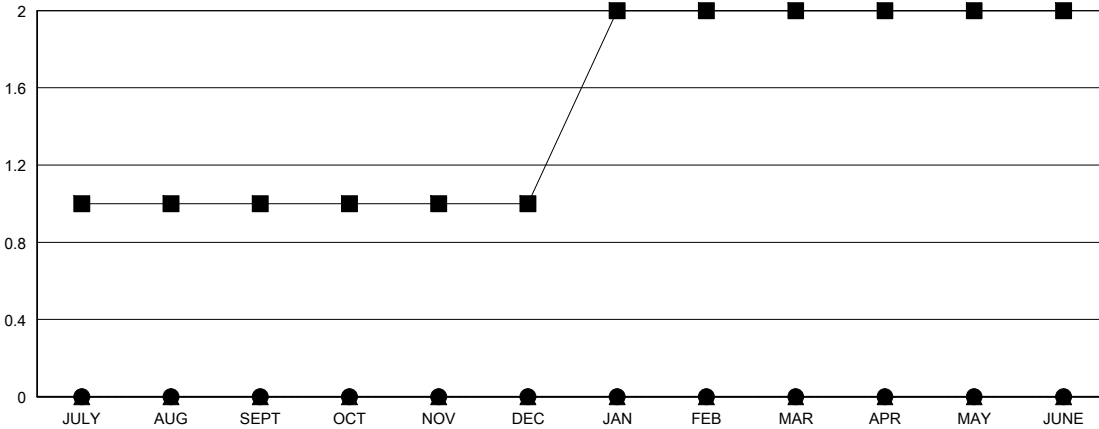
LOCATION KANSAS

GMT CA

Clubs			
RESULTS FOR 2023-2024			
QUARTER	NEW CLUB GOAL	NEW CLUBS	DROPPED CLUBS
JULY/AUG/SEPT	1	0	0
OCT/NOV/DEC	0	0	0
JAN/FEB/MAR	1	0	0
APR/MAY/JUNE	0	0	0

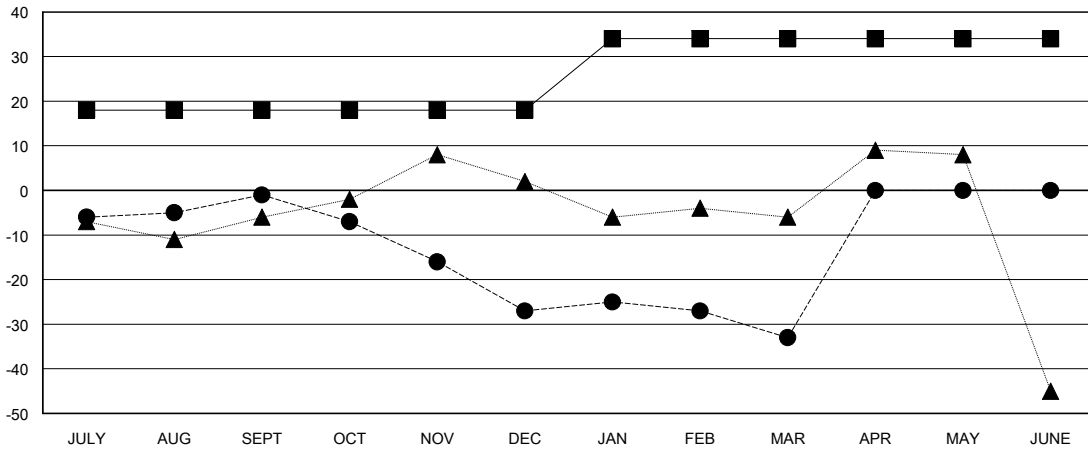
Members			
RESULTS FOR 2023-2024			
QUARTER	MEMBER GROWTH NET GOAL	MEMBER GROWTH ACTUAL	DROPPED MEMBERS ACTUAL (including transfers)
JULY/AUG/SEPT	18	31	31
OCT/NOV/DEC	0	20	46
JAN/FEB/MAR	16	37	42
APR/MAY/JUNE	0	0	0

GOALS AND ACTUAL NEW CLUBS CUMULATIVE



- - CURRENT YEAR GOALS FOR NEW CLUBS
- - CURRENT YEAR ACTUAL NEW CLUBS
- ▲ - LAST YEAR ACTUAL NEW CLUBS

GOALS AND ACTUAL MEMBERS CUMULATIVE



- - MEMBER GROWTH NET GOAL
- - MEMBER GROWTH ACTUAL
- ▲ - LAST YEAR MEMBERSHIP ACTUAL

DROPPED CLUBS: 0	32 CLUBS OF 72 ADDED 1 OR MORE NEW MEMBERS	GENDER DISTRIBUTION MALE 922 (63.50%) FEMALE 530 (36.50%)
DROPPED MEMBERS DECEASED 19 CLUB CANCELLED 0 OTHER 100 TOTAL 119	CLICK HERE FOR CUMULATIVE MEMBERSHIP DATA	TOTAL FAMILY UNIT MEMBERS 357 FAMILY MEMBERS PAYING HALF DUES 185